



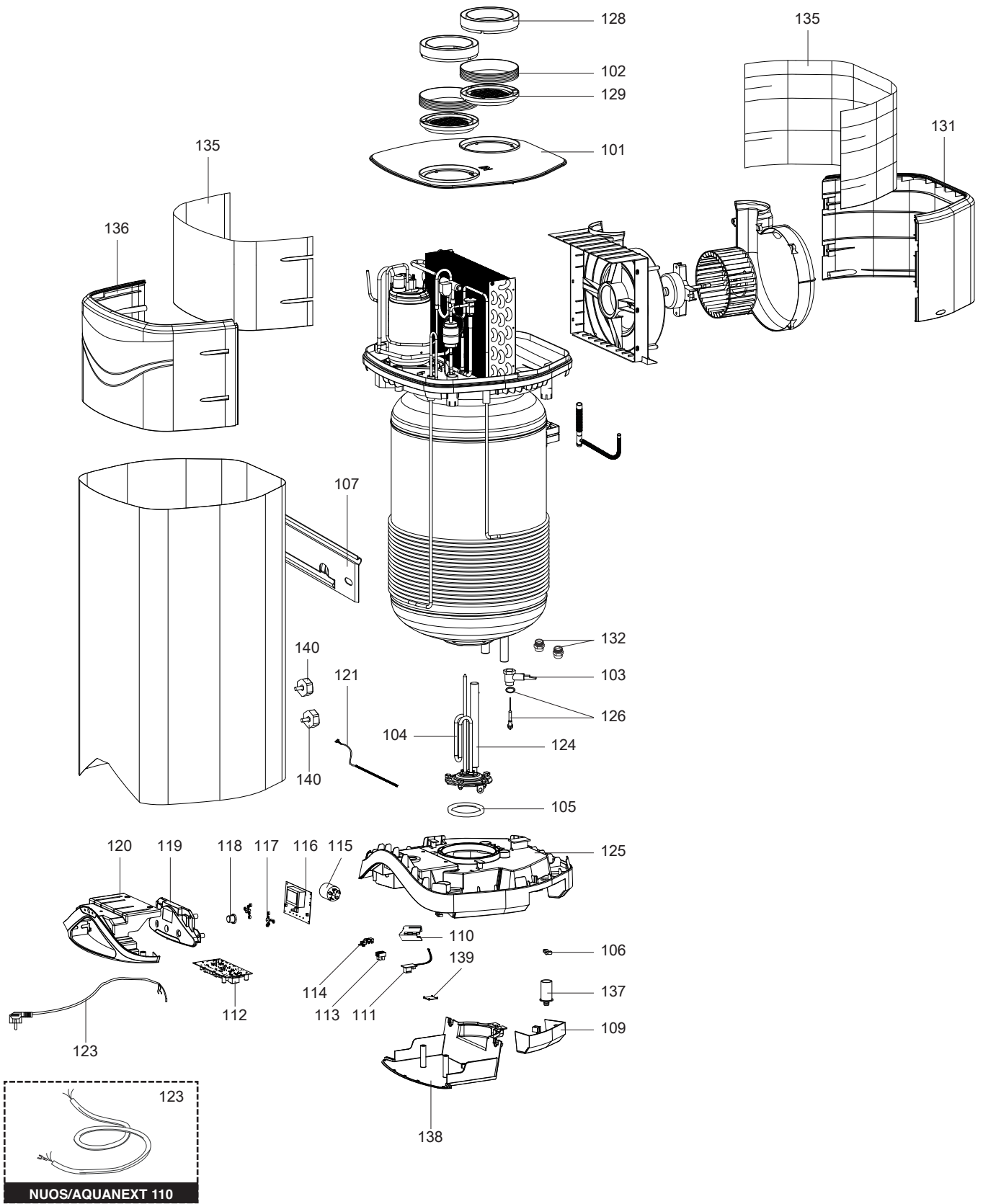
SPARE PARTS EXPLODED VIEW HEAT PUMPS

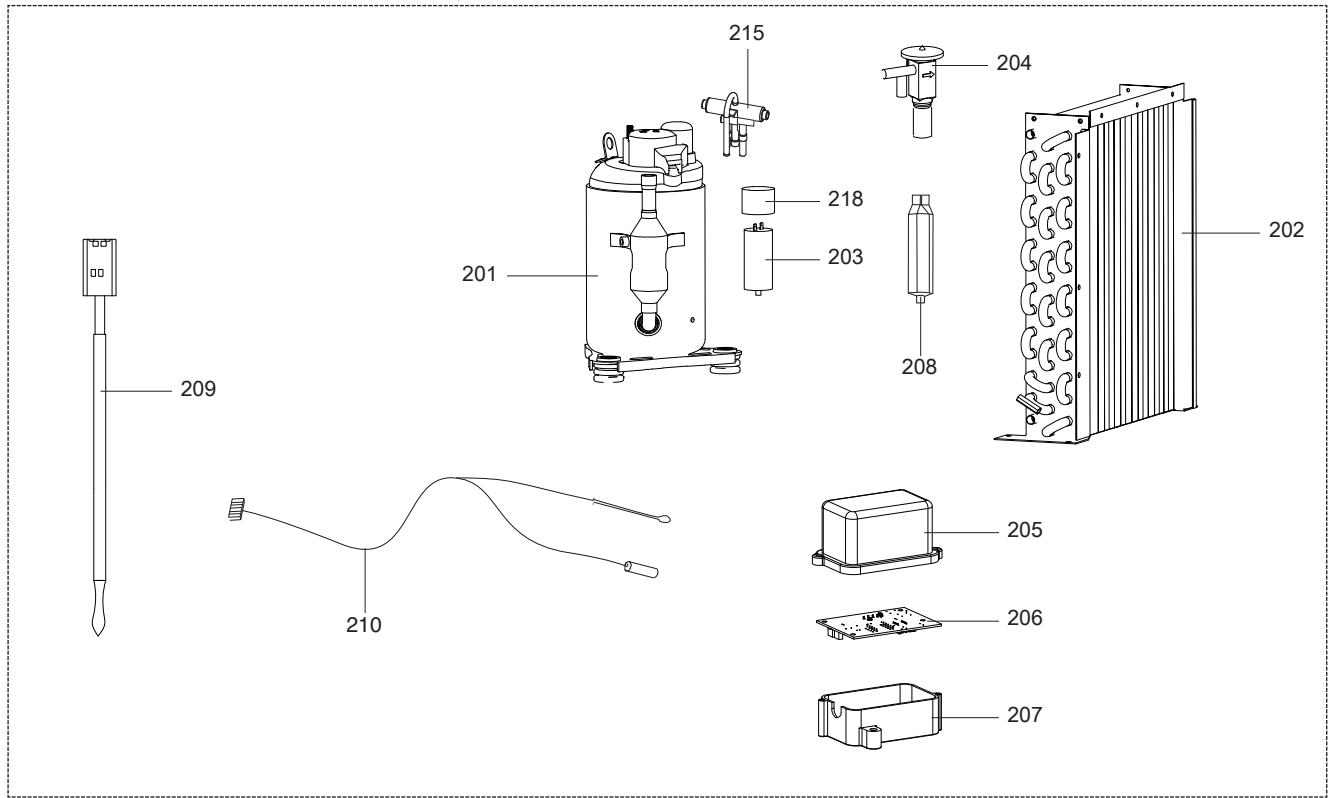
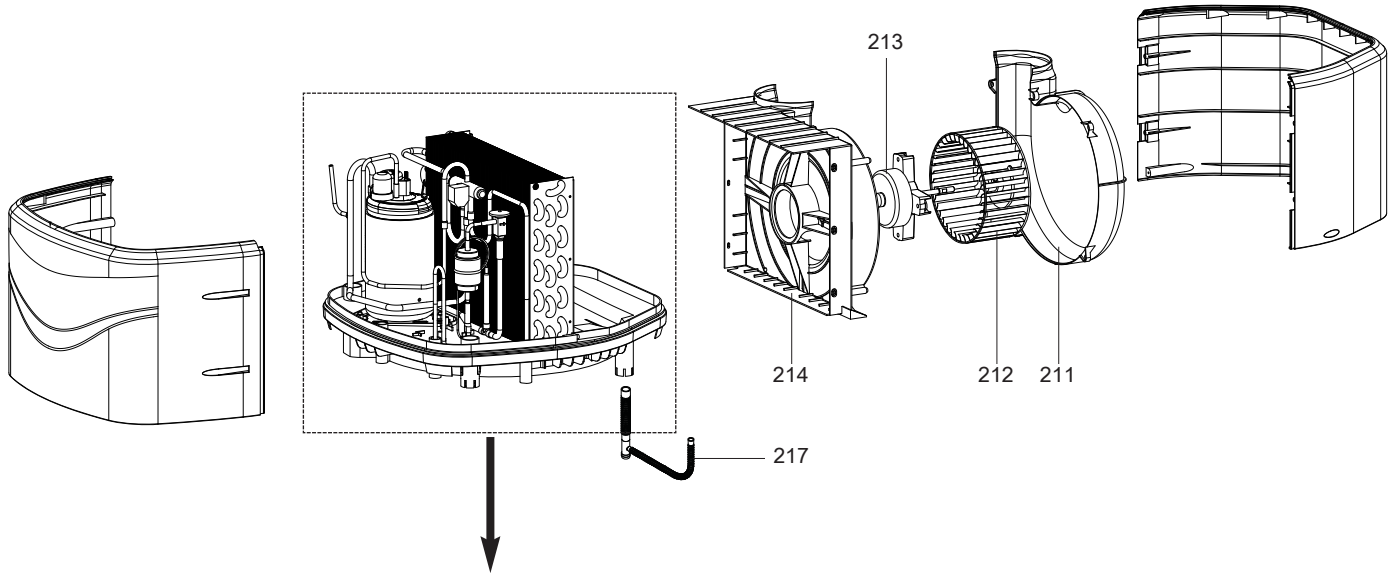
Model

NUOS EVO (JANUS I EVO)

R8216781-16 - 19/04/2018

1	3603543	NUOS EVO 80 WH	12-2011	12-2015
1	3623240	NUOS EVO 80 WH	04-2015	-
2	3629056	NUOS EVO A+ 80 WH	05-2017	-
3	3603545	NUOS EVO 110 WH	12-2011	12-2015
3	3623241	NUOS EVO 110 WH	04-2015	-
4	3629057	NUOS EVO A+ 110 WH	05-2017	-
5	3629028	NUOS EVO 110 WH	11-2015	-
6	3629058	NUOS EVO A+ 110 WH FR	05-2017	-
7	3629047	AQUANEXT OPTI 110	10-2016	-
Col	Reference	Model type	Begin	End

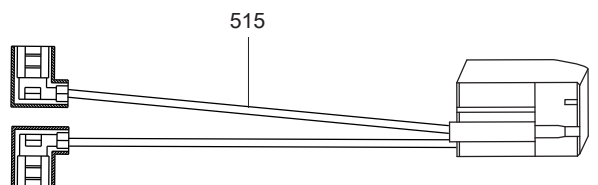
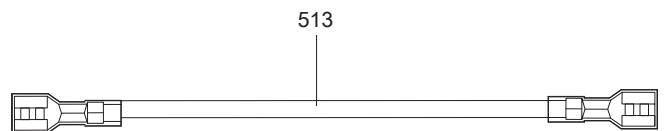
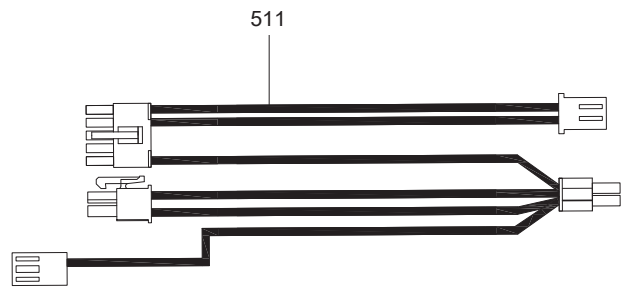
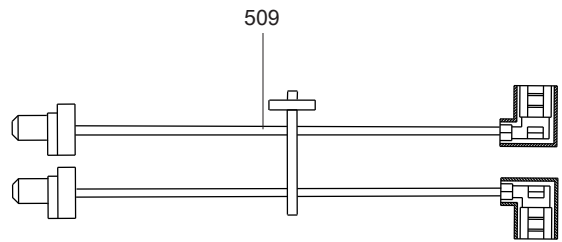
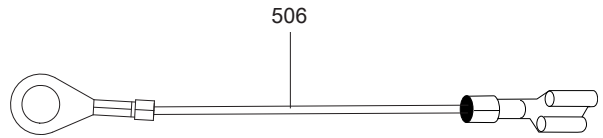
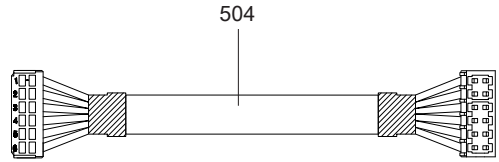
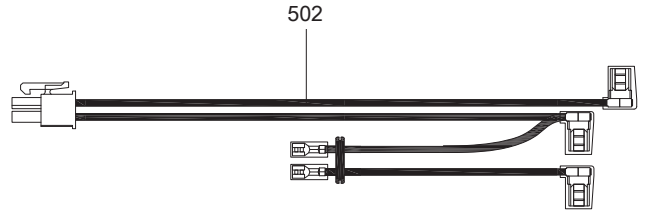
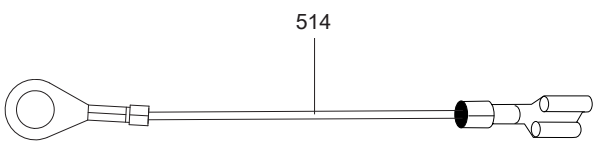
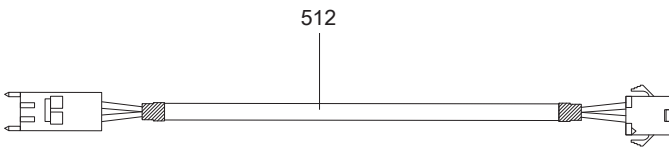
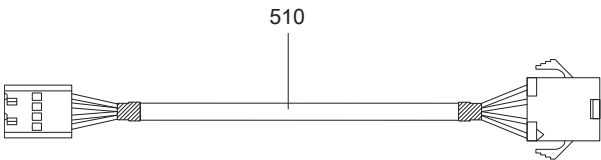
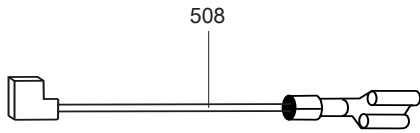
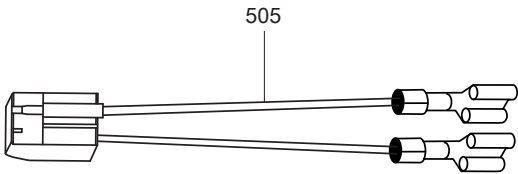
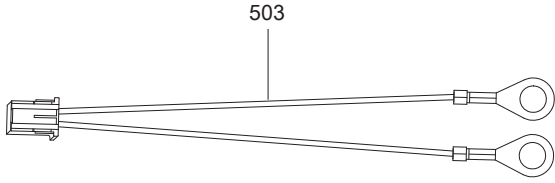
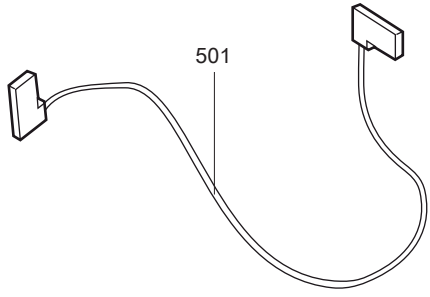




NUOS EVO 80
 NUOS EVO A+ 80
 NUOS EVO 110
 NUOS EVO A+ 110
 NUOS EVO 110 FR
 NUOS EVO A+ 110 FR
 AQUANEXT OPTI 110


 31
 From to

Description	Manf. Pt. N	Type																		
			1	2	3	4	5	6	7	8	9	10	11	12	13	14	15	16	17	18
0200 REFRIGERATION UNIT																				
0201 COMPRESSOR	65151392		●	●	●	●	●	●	●											
0202 EVAPORATOR	65151674		●	●	●	●	●	●	●											
0203 COMPRESSOR CAPACITOR 10uF 1450V	65151675		●	●	●	●	●	●	●											
0204 EXPANSION VALVE 0,8KW	65151676		●	●	●	●	●	●	●											
0205 P.C.B. COVER	65151677		●	●	●	●	●	●	●											
0206 P.C.B.	65153298		●	●	●	●	●	●	●											
0207 P.C.B. BOX	65151390		●	●	●	●	●	●	●											
0208 DRY-FILTER	65151554		●	●	●	●	●	●	●											
0209 NTC DOME	65151679		●	●	●	●	●	●	●											
0210 EVAPORATOR AND AIR SENSOR	65151680		●	●	●	●	●	●	●											
0211 FAN COVER	65151669		●	●	●	●	●	●	●											
0212 FAN	65151670		●	●	●	●	●	●	●											
0213 FAN MOTOR	65151671		●	●	●	●	●	●	●											
0214 FAN BASE	65151672		●	●	●	●	●	●	●											
0215 4-WAY VALVE GROUP	65152621		●	●	●	●	●	●	●											
0217 DISCHARGE PIPE (CONDENSATE)	65152371		●	●	●	●	●	●	●											
0218 CAPACITOR COVER	65151959		●	●	●	●	●	●	●											



LIST OF THE ABBREVIATIONS

HW	: Hot water.
CW	: Cold water.
C	: Ceramic resistance (normal heating).
Ca	: Ceramic resistance (accelerated heating)
TP	: Immersion heater.
1F	: With fittings.
2F	: Without fittings.
3F	: With fittings and another outlet connection.
AMI	: With mixing valve.
SMI	: Without mixing valve.
PUISS	: Power of th appliance.
PN	: Appliance with normal pression.
LP	: Appliance with low pression.
PV	: Appliance with variable power.
PF	: Appliance with fixed power.

IDENTIFICATION PLATE

SERIAL NUMBER

6 Characters :
 Year of manufacture 03 09 08 Manufacturing day
 Month of manufacture

9 Characters :
 Year of manufacture M 12 10 0606 Sequential number
 Month of manufacture

14 Characters :
SI-V-0B0 45 07 0001
 Sequential number
 Year of manufacture : 06 → 2004
 Month of manufacture : → 25 → January 43 → July 7 → 2005
13 → February 29 → August 8 → 2006
32 → March 40 → September etc ...
35 → April 38 → October
39 → May 51 → November
45 → June 12 → December

15 Characters :
02 11 00001 007843
 Year of manufacture
 Month of manufacture
 Code appareil
 Sequential number

21 Characters :
3200050 XX 08115 0000001
 Product reference
 Sequential number
 Year (08) / Manufacturing day (115)

22 Characters :
3200050 XX 070115 0000001
 Product reference
 Sequential number
 Year (07) / Month (01) / Manufacturing day (15)